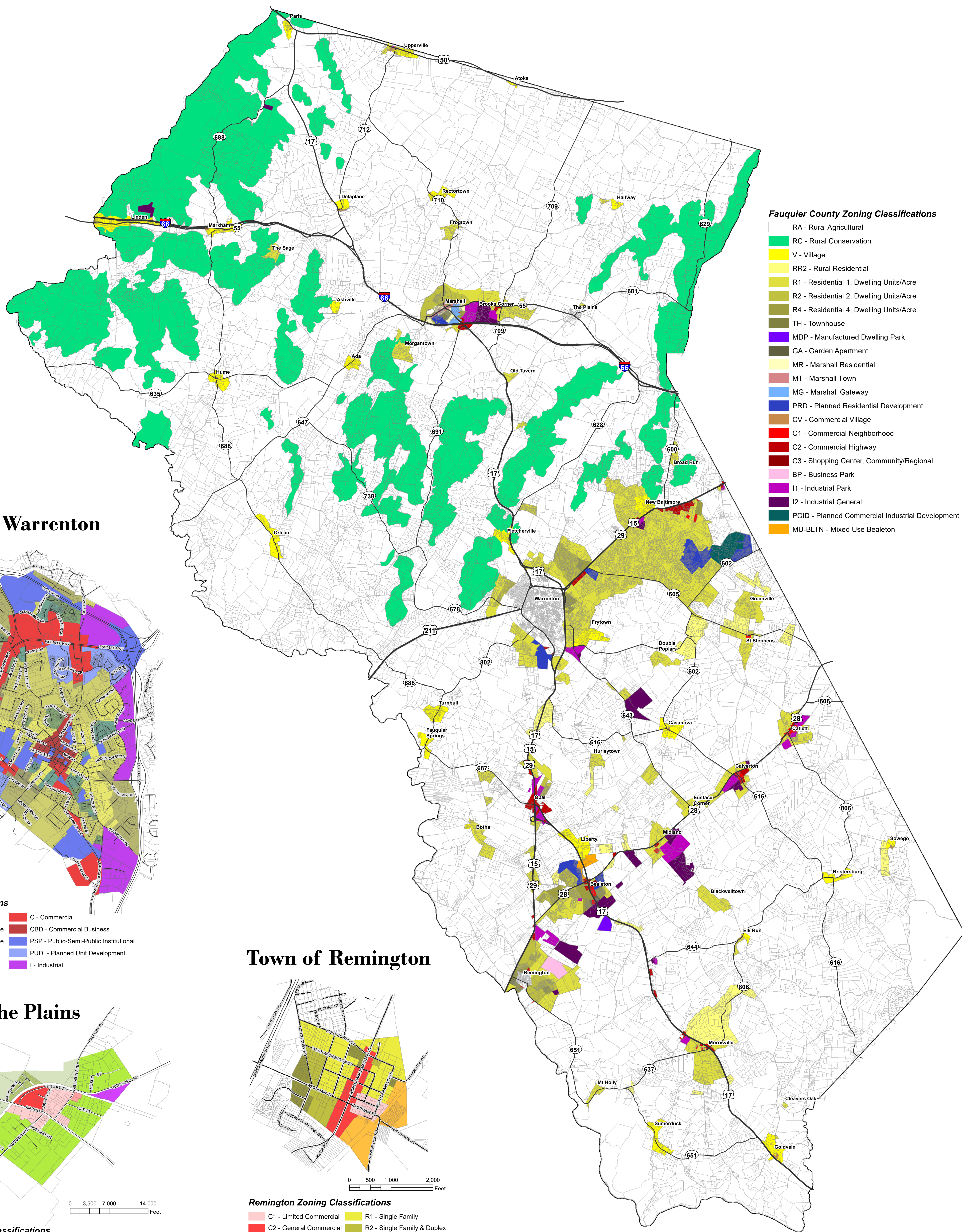




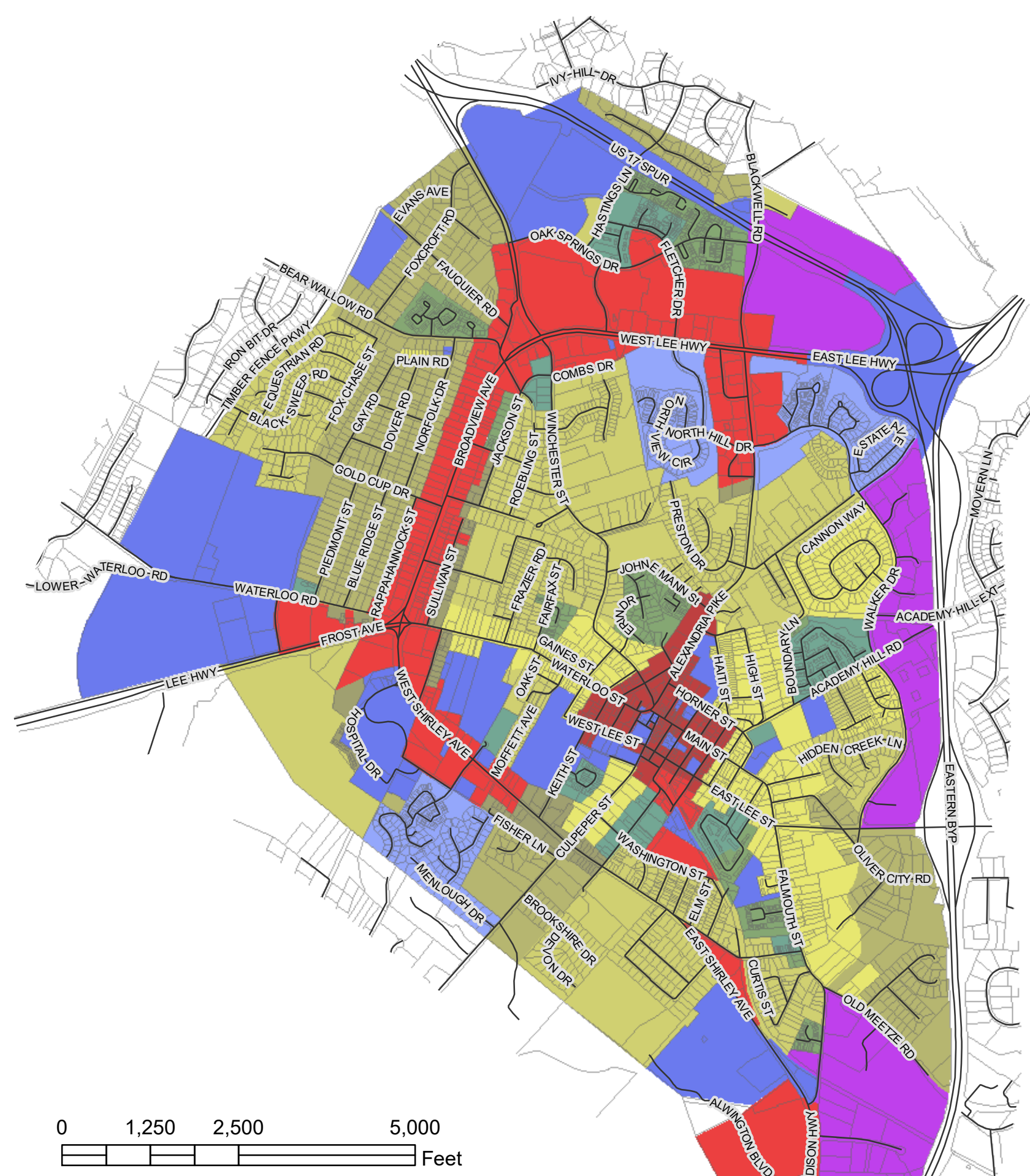
FAUQUIER COUNTY, VA ZONING MAP



Fauquier County Zoning Classifications

- RA - Rural Agricultural
- RC - Rural Conservation
- V - Village
- RR2 - Rural Residential
- R1 - Residential 1, Dwelling Units/Acre
- R2 - Residential 2, Dwelling Units/Acre
- R4 - Residential 4, Dwelling Units/Acre
- TH - Townhouse
- MDP - Manufactured Dwelling Park
- GA - Garden Apartment
- MR - Marshall Residential
- MT - Marshall Town
- MG - Marshall Gateway
- PRD - Planned Residential Development
- CV - Commercial Village
- C1 - Commercial Neighborhood
- C2 - Commercial Highway
- C3 - Shopping Center, Community/Regional
- BP - Business Park
- I1 - Industrial Park
- I2 - Industrial General
- PCID - Planned Commercial Industrial Development
- MU-BLTN - Mixed Use Bealeton

Town of Warrenton



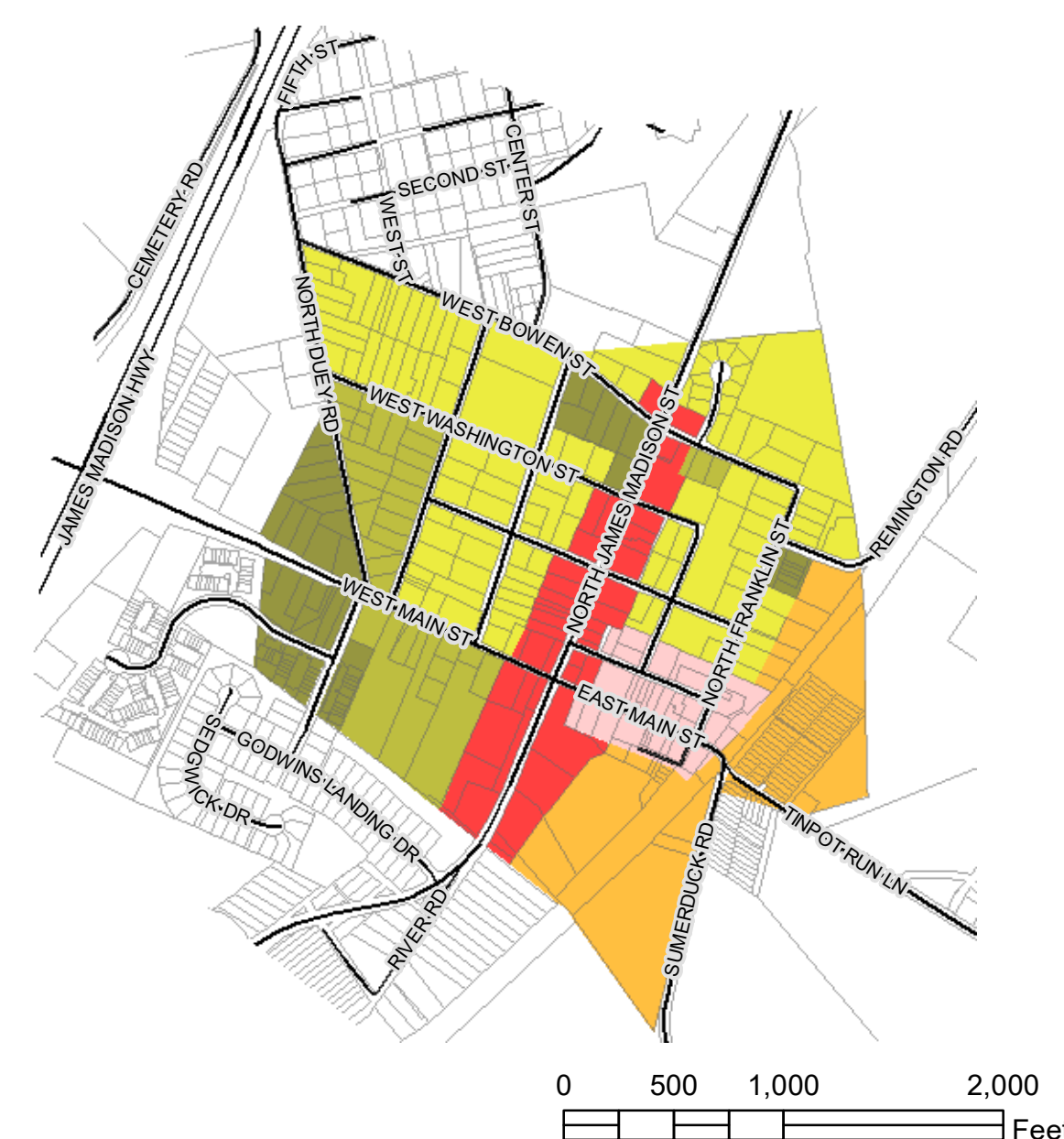
- #### Warrenton Zoning Classifications
- R6 - Residential -6 Dwelling Units/Acre
 - R10 - Residential -10 Dwelling Units/Acre
 - R15 - Residential -15 Dwelling Units/Acre
 - RO - Residential Office
 - RT - Residential Townhouse
 - RMF - Residential Multi Family
 - C - Commercial
 - CBD - Commercial Business
 - PSP - Public-Semi-Public Institutional
 - PUD - Planned Unit Development
 - I - Industrial

Town of The Plains



- #### The Plains Zoning Classifications
- R1 - Residential
 - R2 - Residential
 - R3 - Residential
 - M1 - Light Industrial
 - VC1 - Village Center General
 - VC1C - Village Center General Conditional
 - VC2 - Village Center Industrial

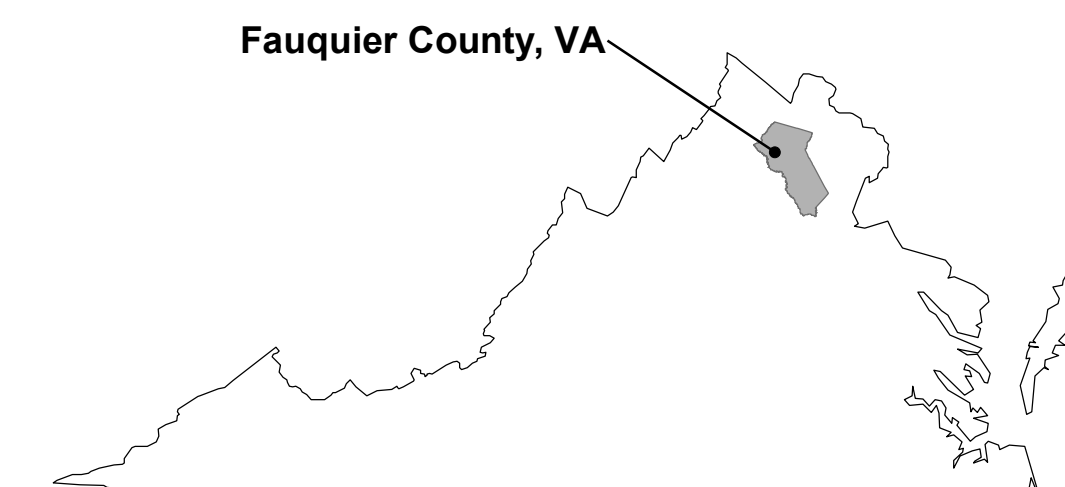
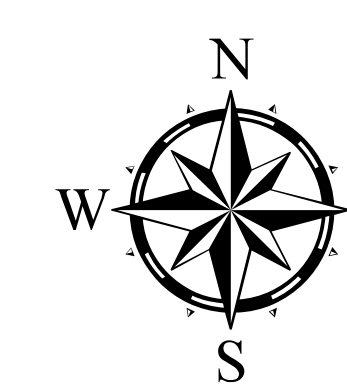
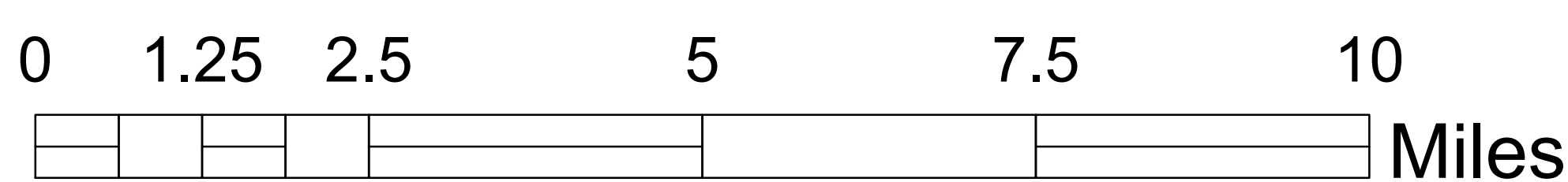
Town of Remington



- #### Remington Zoning Classifications
- C1 - Limited Commercial
 - C2 - General Commercial
 - M1 - Limited Industrial
 - R1 - Single Family
 - R2 - Single Family & Duplex
 - R3 - Townhouse & Multifamily

MAP CREATED BY: Fauquier County GIS Department
 DATA MAINTAINED BY: Fauquier County GIS and
 Department of Community Development
 DATE: March 29, 2021

1 in = 6,000 ft



DISCLAIMER
 This product has been created with the highest degree of accuracy possible. However, Fauquier County nor any of its contractors or suppliers can be held responsible for any damages due to errors or omissions in this product. Corrections and additions should be brought to the attention of the above organization. Phone: (540) 422-6260

Fauquier County zoning boundaries are maintained by Fauquier County Community Development and GIS Department. Zoning boundaries for the Town of Warrenton, The Plains and Remington have been provided by each incorporated town respectively.